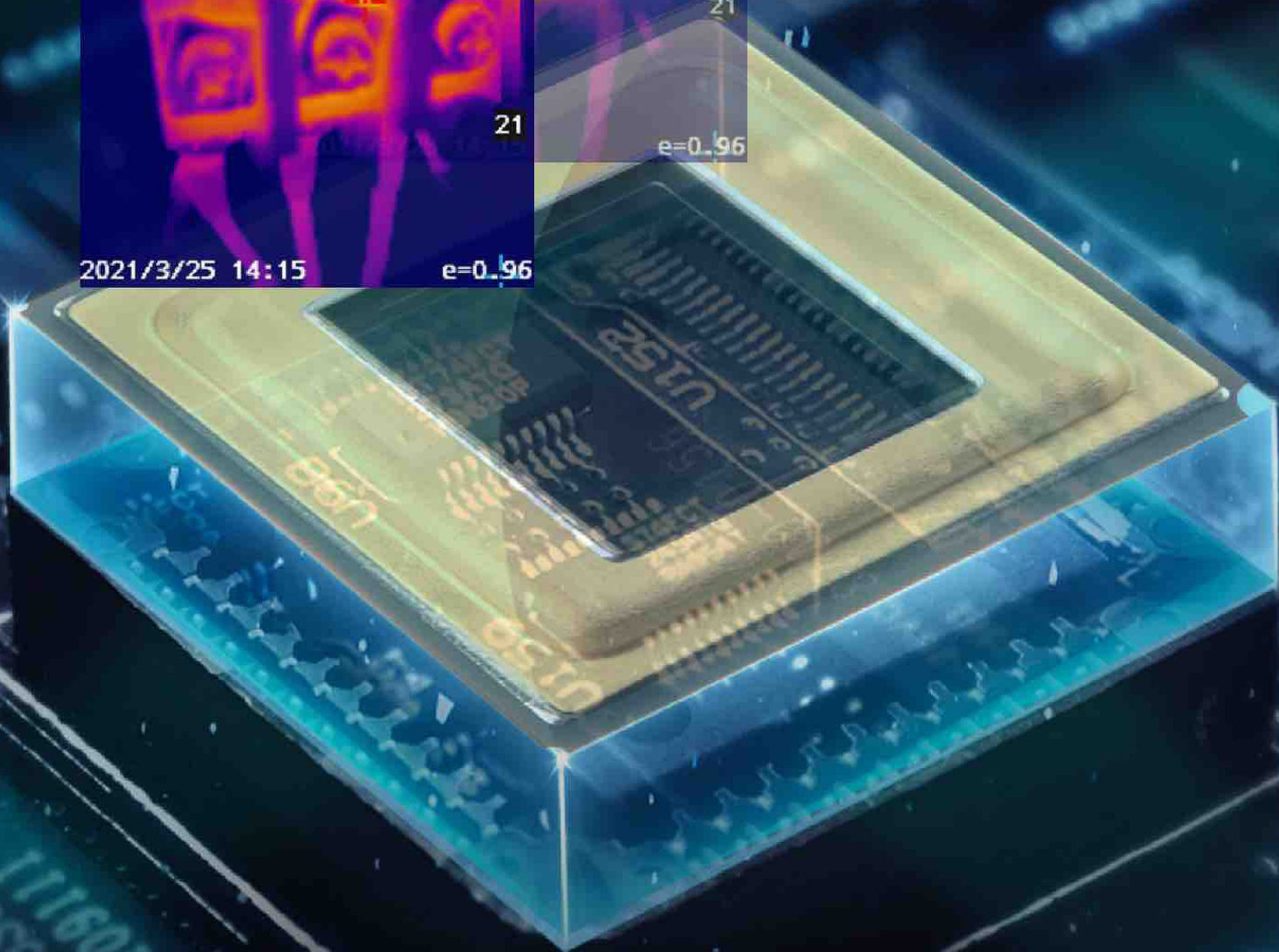
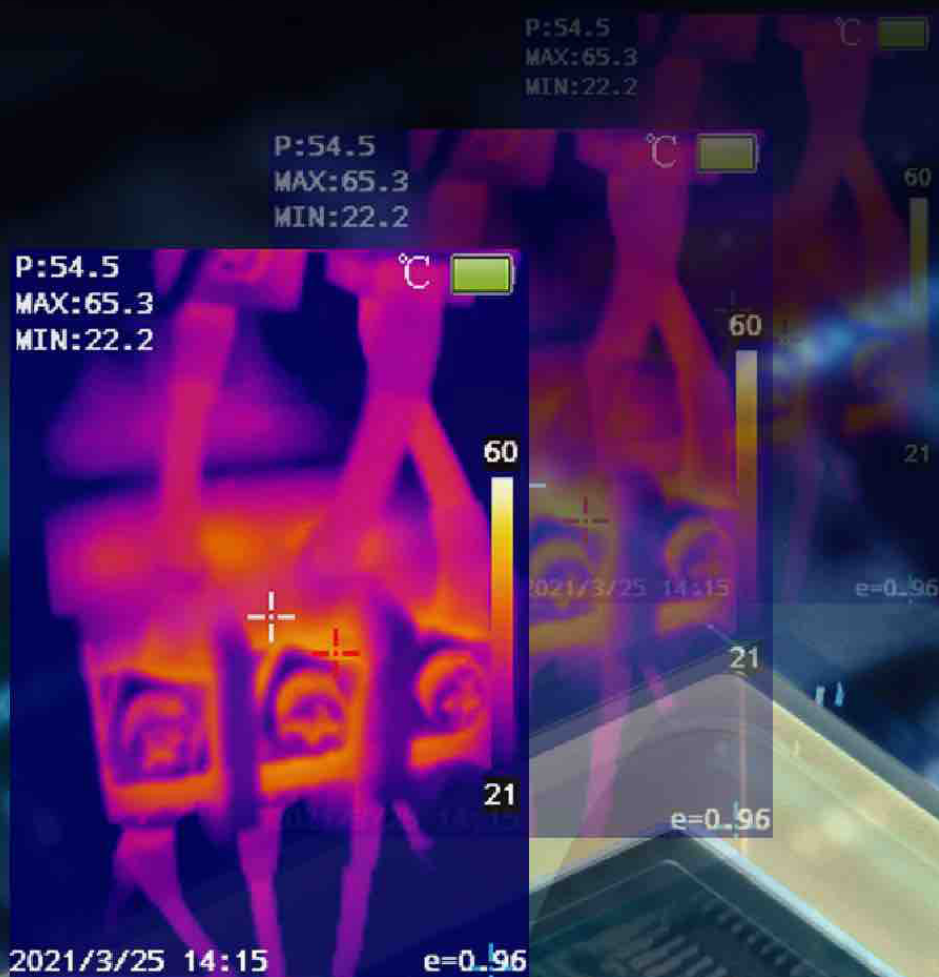




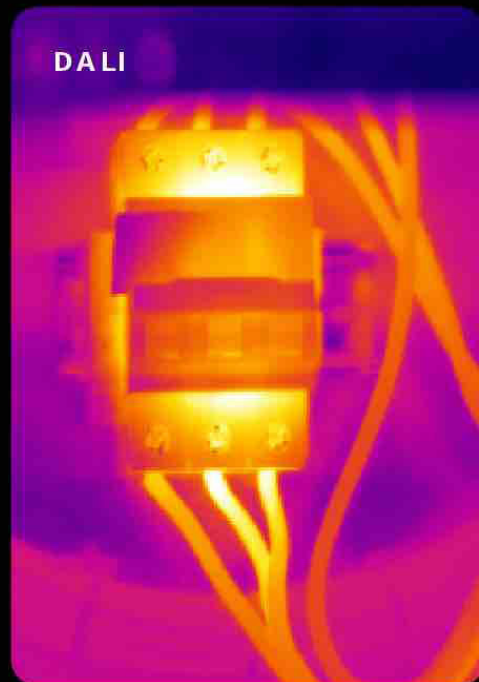
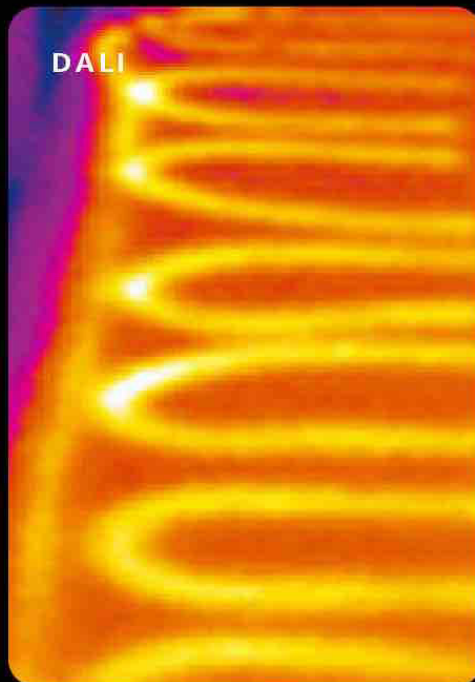
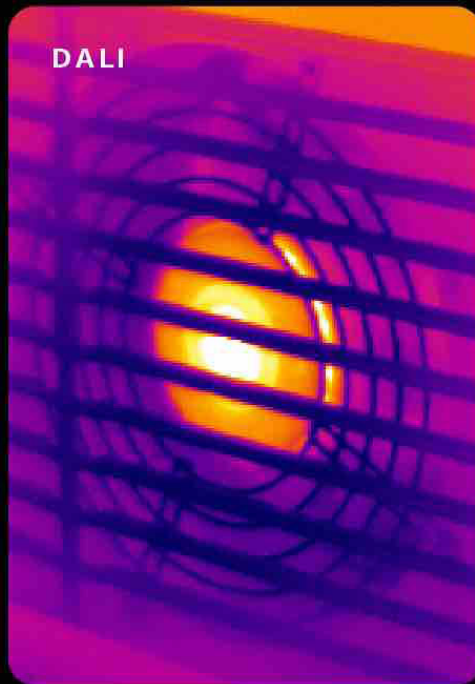
Excellent chip

- ① 160×120 pixels infrared detector with self-developed core chip
- ② Capture sharper onscreen images with true and full-frame rate infrared temperature measurement



A wide range of applications

- ① temperature measurement range, which can be extended to 650°C
- ② Easy to handle problems whether it is electromechanical diagnosis or household building inspection



Focus-free

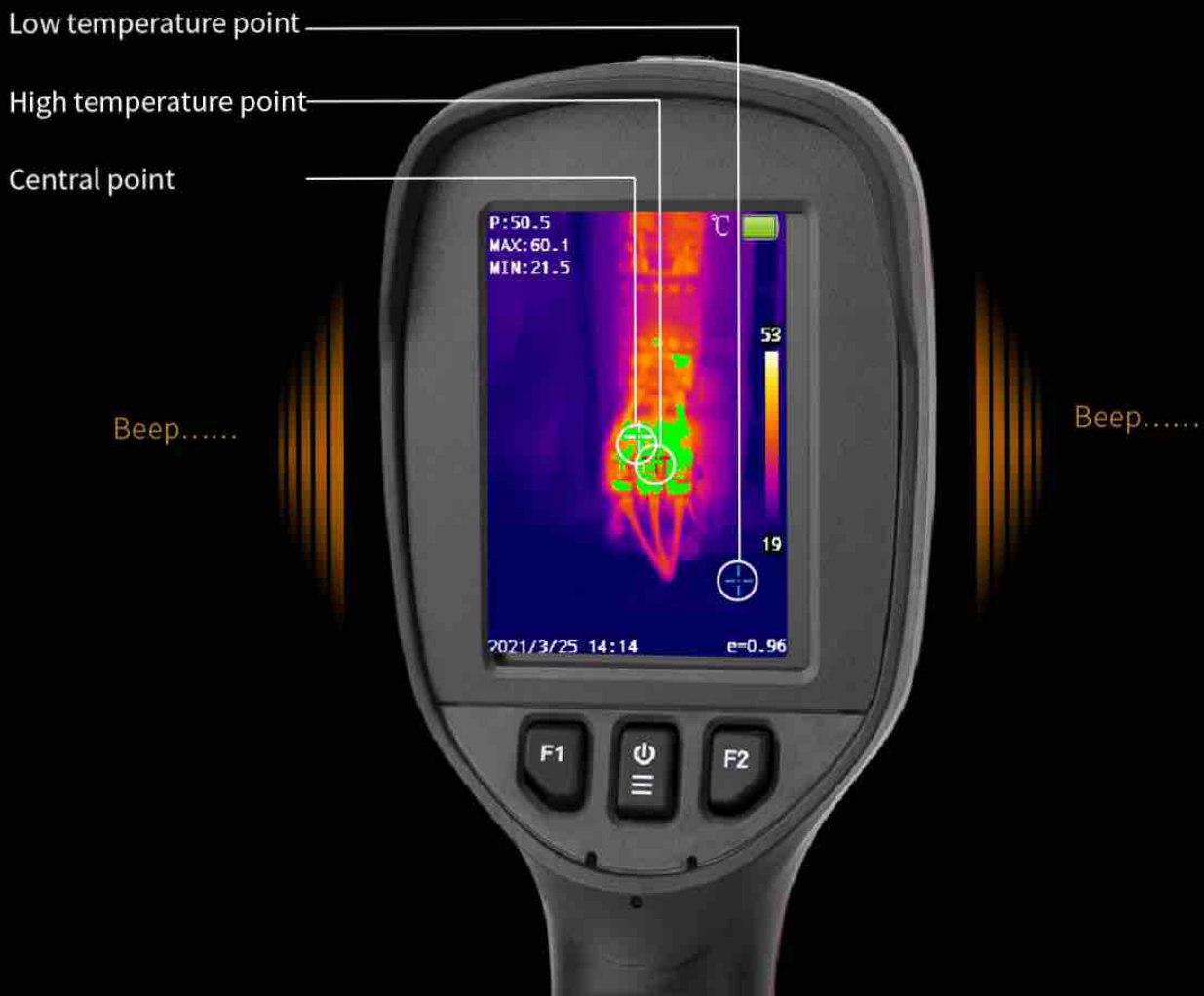
- ① Efficient investigation in small spaces with minimum 0.2m detection distance and tedious focusing is saved
- ② Offer complete field coverage with max. 37° FOV

37°FOV



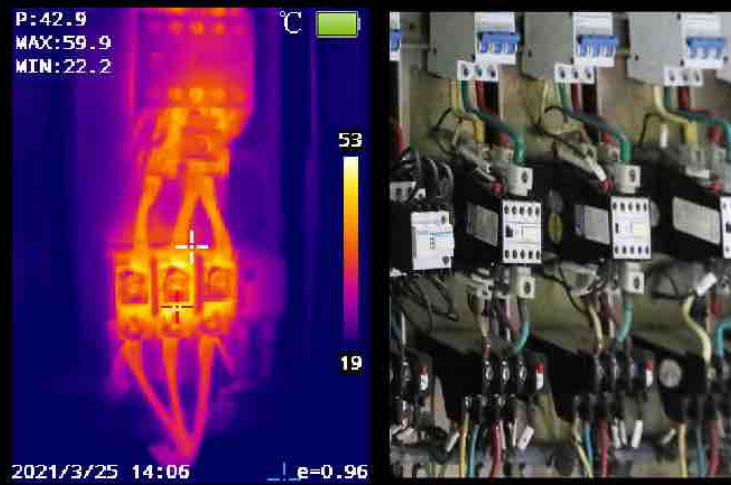
The screen displays extremely high/low temperature, with sound and light warning

- ① Visualize low temperature point, high temperature point and central point at any time
- ② Easy to find problems with temperature measurement alarm setting

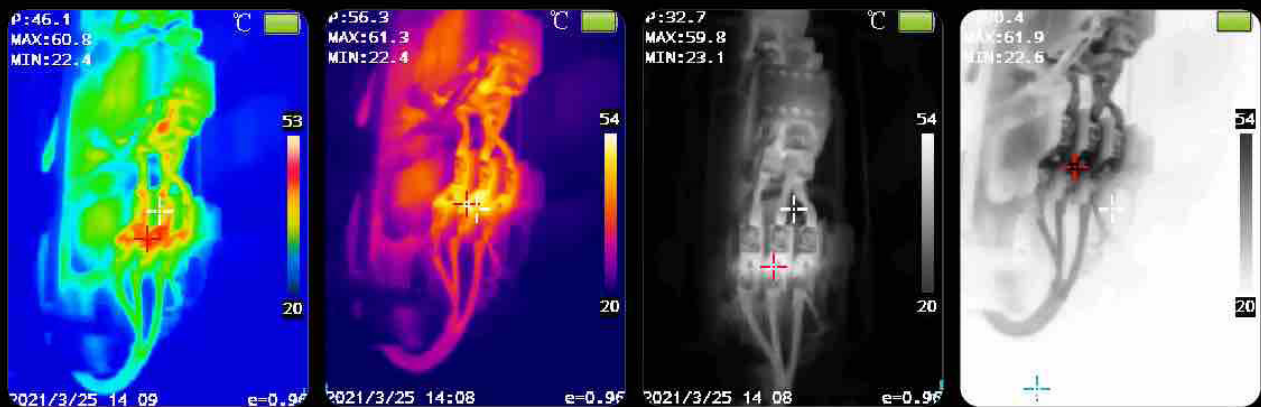


Infrared color palettes/Visual light

① Thermal/visual quick switching



② Auxiliary observation with four kinds of color palettes



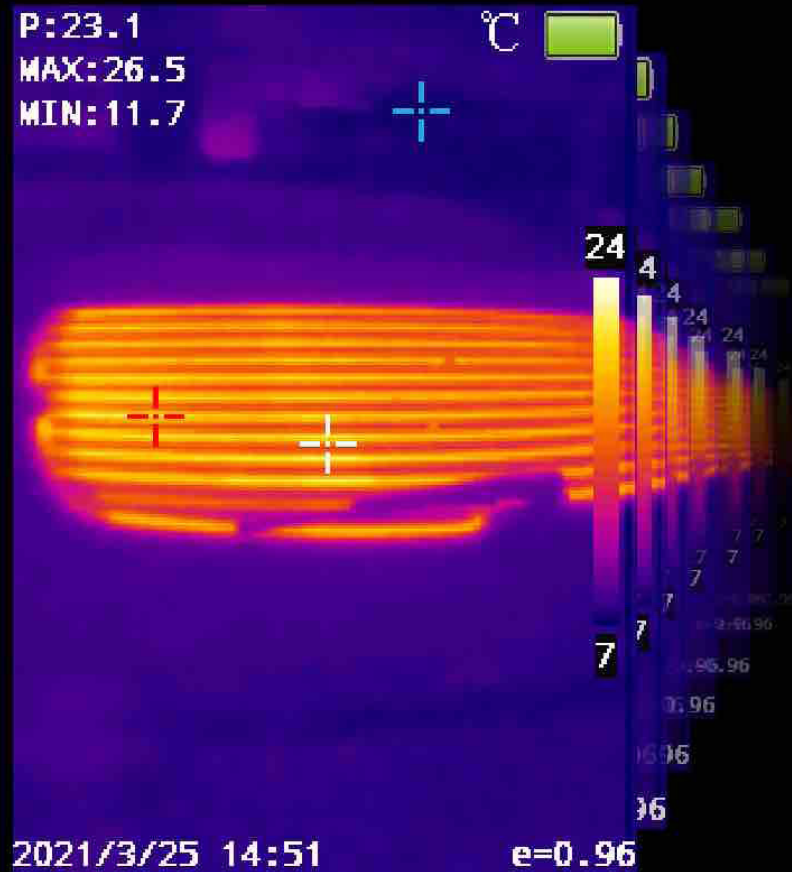
Large screen

- ① 3.2 inch LCD screen
- ② Easy to observe



Smooth picture with high frame rate

- ① 60HZ frame rate
- ② Smooth picture without delay
- ③ Steady measurement and accurate observation



High-speed transmission and mass storage

- ① Data transmission and fast charging
- ② Support power bank, never worry about endurance problem
- ③ More digital data can be saved with Built-in 16G memory card



Everything done with 4 buttons

- ① 2 level menu with 4 buttons
- ② Fast location, simple operation



Free software

- ① Reanalysis of offline professional temperature measurement image data
- ② Easy and efficient to generate report



Electrical diagnosis HVAC maintenance



Equipment maintenance Car maintenance Electrics and Electronics